



Lexham Gardens

W8 · South Kensington · Available now

£4,160pcm (£960pw)

£960 holding deposit · £4,800 security deposit

- Flexible
- 4th floor
- Dishwasher
- Freezer
- Pet Friendly
- Washer
- 812 sq ft
- Ample Storage
- Dryer
- High Ceilings
- Refurbished
- 2 beds
- Big Windows
- Elevator
- HMO Licence
- 24hr Security
- 1 bath
- Concierge
- Fibre Eligible
- Modern
- Terrace

3D tour

Photos

Floorplan

Map



BC Property UK
info@bcpropertyuk.com · +447481519800

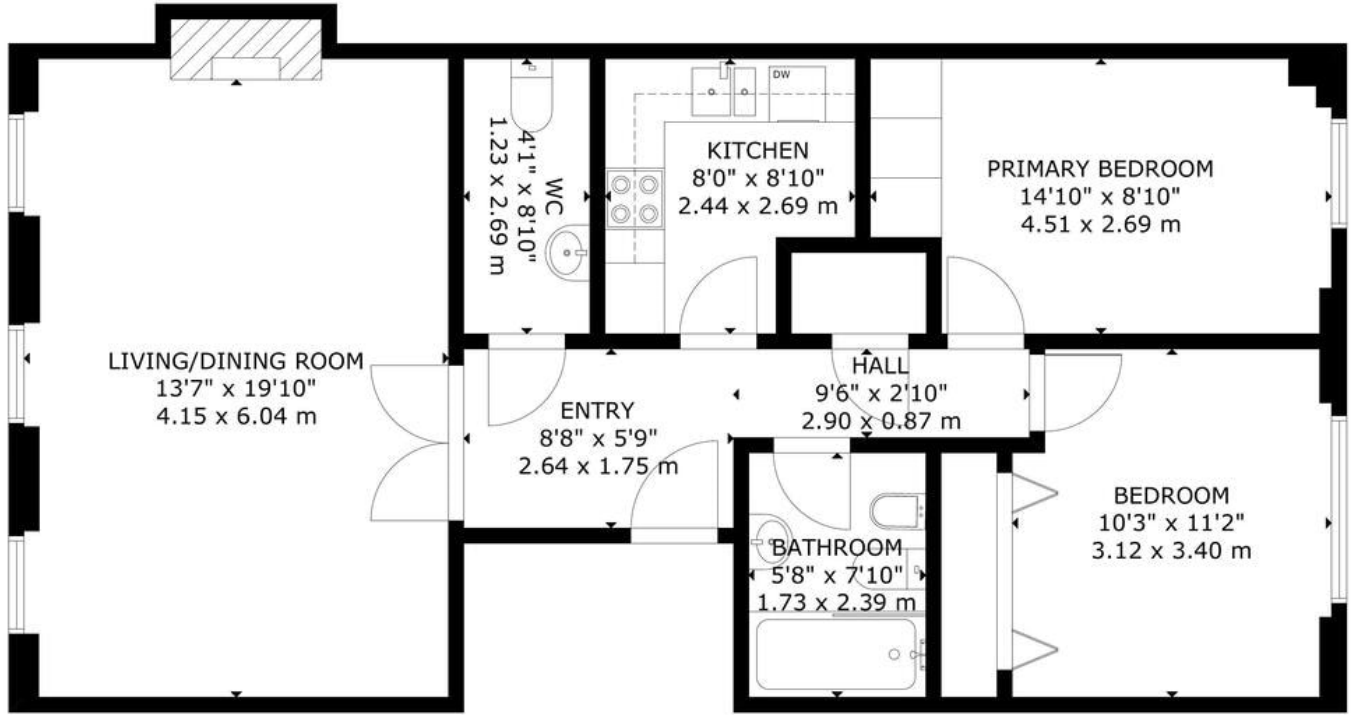
Lexham Gardens

Photos





Lexham Gardens
Floorplan



GROSS INTERNAL AREA
TOTAL: 75 m²/812 sq ft
FOURTH FLOOR: 75 m²/812 sq ft
SIZE AND DIMENSIONS ARE APPROXIMATE, ACTUAL MAY VARY

FOURTH FLOOR

Map