



Montagu Row

W1U · Marylebone · Available 6 April

£3,000pcm (£692pw)


£692 holding deposit · £3,462 security deposit

 Furnished

 665 sq ft

 2 beds


 1 bath


 3rd floor


 Big Windows

 Dryer


 Freezer


 High Ceilings

 Modern

 Open Plan Kitchen

 Quiet Street

 Student Friendly

 Walk up

 Washer

3D tour

Photos

Floorplan

Map

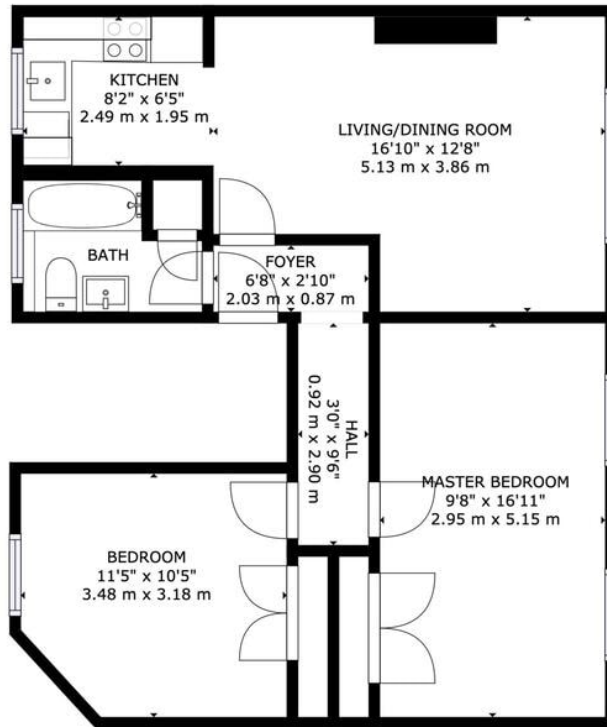
Montagu Row

Photos



Montagu Row

Floorplan



THIRD FLOOR

GROSS INTERNAL AREA
FLOOR 1: 665 sq ft, 62 m²
TOTAL: 665 sq ft, 62 m²
SIZES AND DIMENSIONS ARE APPROXIMATE, ACTUAL MAY VARY.

Map