



## Philbeach Gardens

SW5 · Earl's Court · Available now

**£3,350pcm (£773pw)**


£773 holding deposit · £3,865 security deposit

 Furnished

 624 sq ft


 2 beds


 2 baths


 1st floor

 Ample Storage

 Big Windows

 High Ceilings

 Modern

 Open Plan Kitchen

Photos

Floorplan

Map



BC Property UK  
info@bcpropertyuk.com · +447481519800

## Philbeach Gardens

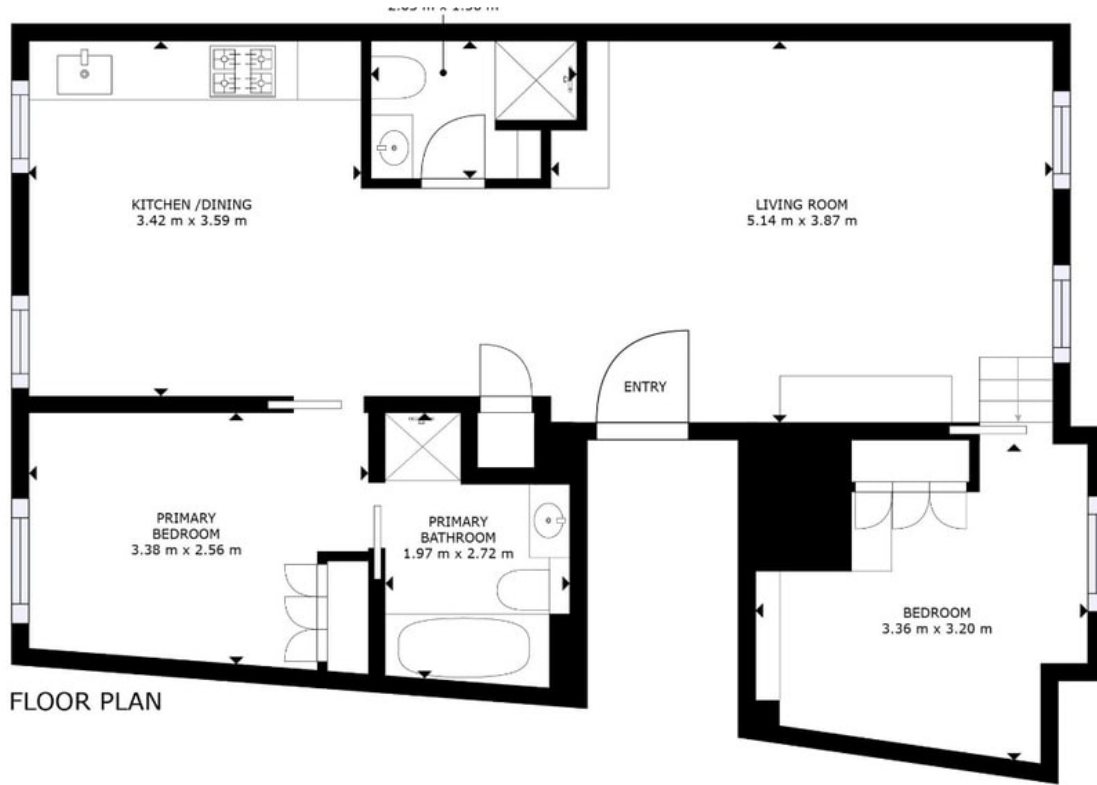
Photos





### Philbeach Gardens

### Floorplan



FLOOR PLAN

GROSS INTERNAL AREA  
FLOOR PLAN: 63 m<sup>2</sup>  
SIZES AND DIMENSIONS ARE APPROXIMATE, ACTUAL MAY VARY.

Map