



Balfe Street

N1 · King's Cross · Available 15 April

£2,999pcm (£692pw)

£692 holding deposit · £3,460 security deposit

- Furnished
- 661 sq ft
- 2 beds
- 1 bath
- Ground floor
- Big Windows
- Freezer
- Garden
- High Ceilings
- Modern
- Student Friendly
- Terrace
- Washer

3D tour

Photos

Floorplan

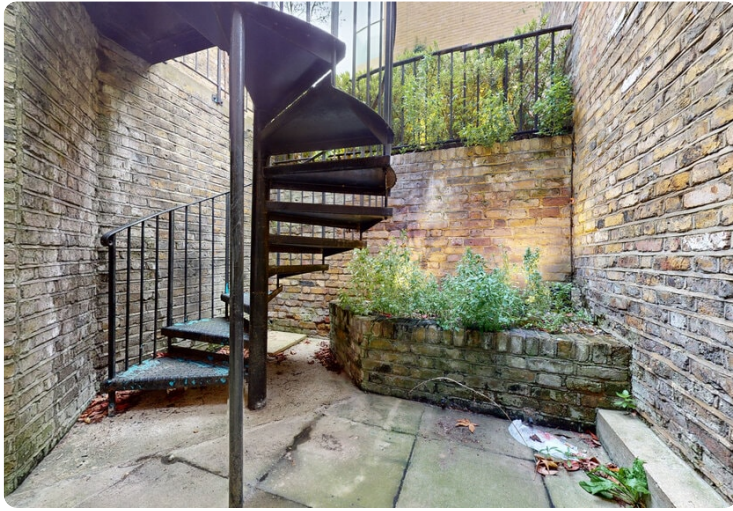
Map



BC Property UK
info@bcpropertyuk.com · +447481519800

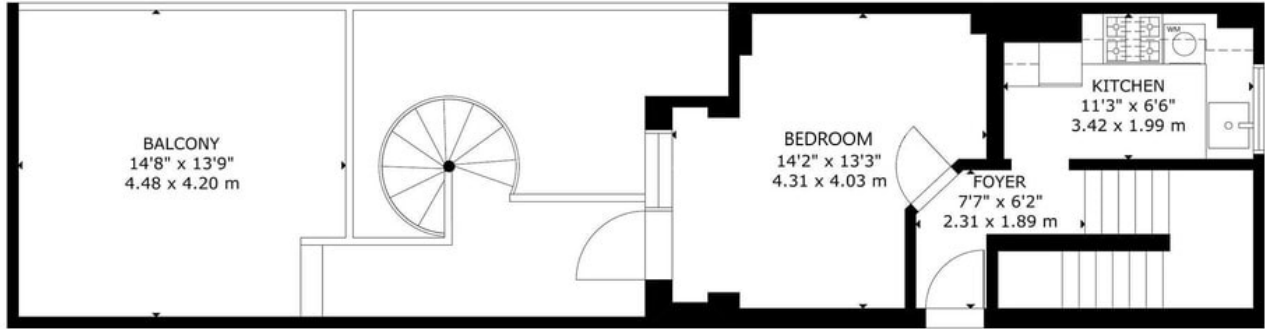
Balfe Street

Photos

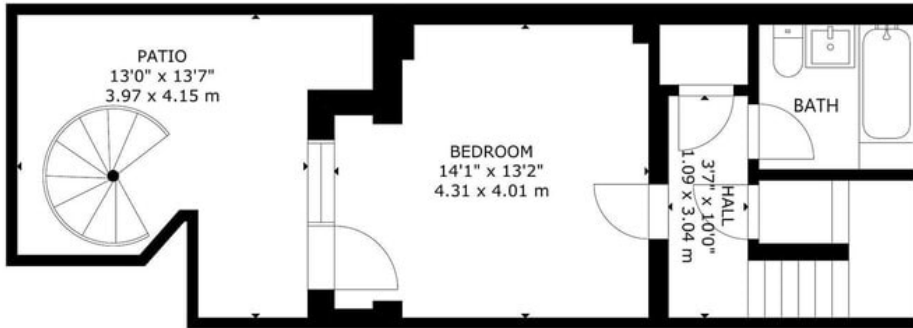




Balfe Street
 Floorplan



GROUND FLOOR



LOWER GROUND FLOOR

GROSS INTERNAL AREA
 TOTAL: 62 m²/661 sq ft
 LOWER GROUND FLOOR: 31 m²/329 sq ft, GROUND FLOOR: 31 m²/332 sq ft
 EXCLUDED AREA: BALCONY: 18 m²/195 sq ft, PATIO: 15 m²/161 sq ft
 SIZE AND DIMENSIONS ARE APPROXIMATE, ACTUAL MAY VARY.

Map